

URGENT!

You are registered!!!

CAMP ALLENDALE SUMMER CAMP

2012

Everything is important, please read carefully!

The purpose of this sheet is to help you prepare for your camp experience at Camp Allendale. We want you to have a great time!

Check-in is at the Main Dining Hall!

The Campgrounds & The Outpost Store will open at 3:30 P.M. on Sundays

All camp programs will check-in at the Main Dining Hall. Your cabin or sleeping area will be pre-assigned based on the cabinmate that you submitted on your registration form. **There is no need to arrive early to stand in line!**

When You ARRIVE...

Check-in for campers is between 4:30 and 5:45 p.m. on Sunday. Come to the Main Dining Hall to check-in. Please make sure that you arrive by 5:45 p.m. **If you are unable to arrive on time or are not going to be able to attend, please notify the office at 317-878-4400 ext. 101.**

After entering the dining hall, you will proceed through this process:

- 1. Health screening:** Temperatures will be taken along with a very brief current medical history. If the camper's temperature is over 100.4°, they will wait for 15 minutes to see if their temperature decreases. If it does not, they will have to return home until their fever breaks.
- 2. Medications:** Medication (**in the original container**) will be turned in to your nurse, along with any changes in health from the original health record.
- 3. Fees due or other registration issues?** There will be two check-in lines. One for fees paid and one for fees still due. At that time you will receive your canteen/mission cards, wrist bands and dorm assignments.
- 4. No sleeping areas will be unlocked until 6:00 p.m.** At that time, you may move into your cabin.

Grade 1 & 2 camps have an additional sheet attached with these pages.

What to bring...

- ✓ Bible, pencil, paper, stamps, etc.
- ✓ Clothing (please note clothing rule). Please bring clothing that can take a week of camp (including a jacket) and mark your stuff with your name!
- ✓ Bedding or sleeping bag
- ✓ Towels, soap, toothbrush, etc.
- ✓ Swim suits, cameras, sunscreen, bug spray

Visitors

Outside visitors (parents too), phone calls, etc. are discouraged during camp. If a camper must be contacted, please contact the camp office first at 878-4400. Only parents, grandparents, siblings, or church ministers may visit campers. Visitors under 18 are not permitted on the campgrounds without an adult. All camp visitors must leave the campgrounds by 10 pm.

Dismissal Information

Friday Schedule!!!

Camp dismisses at noon with an all-camp rally for the campers and parents at 11:15 am. Parents can arrive early and browse the camp store and watch the program. Please bring your lawn chairs for our closing rally. Plan to join us!!!

Check-out Procedures

Grades 1-6 will receive a wristband that is numbered. It will have a detachable tab with the same number that the parent will take home. After the closing rally, or at your child's dismissal time, you will present the tab to their counselor. If you lose or forget your tab, make sure you bring a picture ID!

Camp Times

NEW

Day Camps Saturday 9 a.m. – 7 p.m.

Grade 2 Sessions begin at 1 pm on Friday & end at 7 pm on Saturday



All other camps begin at 6 pm on Sunday & end at noon on Friday

More details on the other side!!!

It Is To Your Advantage to pay your fees in full **at least two weeks** before camp. Payments made in office a few days before camp may not be posted by registration day. You may still have to go through the "payment due" line. You can pay on line anytime and payments will be posted to your account immediately.

Camp Rules

Your program director will fill you in more completely when you arrive.

- 1 Hazing or bullying whether through physical or verbal methods may be grounds for immediate dismissal.
- 2 Possession/use of any drugs except prescription medicine is prohibited.
- 3 All medication must be given to the nurse at beginning of the week.
- 4 Possession or use of alcoholic beverages is prohibited.
- 5 Possession of tobacco is prohibited.
- 6 Possession of fireworks, firearms or weapons is prohibited.
- 7 Any sexual promiscuity is prohibited.
- 8 Campers are not to have Cell phones or ipods in their possession. They will be confiscated and returned to the camper at the closing of the camp session.
- 9 No campers or faculty are to go inside cabins of the opposite sex. Immediate dismissal may occur.
- 10 Camp Allendale is a **NO PEANUT ZONE**. No peanut products of any kind are allowed on the grounds.

Dress Code

Swim suits are for the pool and beach area or other designated water activities. If suits are worn at other activities or areas, they should be covered (girls). Please encourage kids not to have wet suits on all day. Shoes must be worn at all times for safety.

Females: Shorts and skirts must reach at least midway of the thigh. No halter or bare midriff or spaghetti straps. No two piece swimsuits.

Males: Shorts must reach at least midway on the thigh. Shirts must be worn at all times with the exception of athletic events designated by program director.

No Sunday Evening Meal



You may purchase food from the Watering Hole from 4:45-6 pm!

No Pets On Opening Day!

Parents: Please leave pets at home on both opening & closing days! Thanks!



No Return Policy & Early Dismissal

As we stated in our brochure, we have a "no return to camp" policy. It is necessary for several reasons including: security issues, disrupts the camp program, the family group, and the camper, as well as it sends the wrong message. However, if you are going to have an early dismissal, and not return, here is what you need to do. On check-in day, you will be required to fill out an Early Dismissal Form at the Registration Table, that informs us of when and who will pick up your camper. When you come to pick up your child, you must bring your "receipt" to the office. If the office is not open, you need to take this paper directly to the program director of your child's week of camp. We hope that all campers will be able to stay their whole week of camp here at Allendale! We love having your camper here!

Health & Safety

Every week there are multiple trained nurses and emergency professionals on-site to address health and safety concerns. We will attempt to notify you if your camper becomes ill or sustains an injury. Please fill your health form out as accurately and completely as possible....this is very important! Insurance claims will be filed in the parent's name with the information supplied on the camper's health card. **CAMP ALLENDALE DOES NOT PROVIDE INSURANCE COVERAGE FOR CAMPERS UNLESS THEY HAVE NO INSURANCE OF THEIR OWN.**

The Outpost Store & Watering Hole

We have plenty of Allendale gifts for you to check out! The store will be open at 3:30 PM. **(Come early to beat the rush!)** We also have Allendale Care Packages available that are customized by the parent and we deliver with the mail Monday-Thursday & Saturdays for grade 2 camps.

Order a Care Package & Assure Your Child A Special Treat This Week

Also, be sure to come over and check out our Watering Hole! We will have burgers, hot dogs, and other food and drinks available to purchase on Sunday afternoons. No more traveling to town or having the hassle of packing a picnic. Come grab a bite to eat at the Allendale Watering Hole!

Mail

Please follow these guidelines to help make mail reach your camper on time.

- Mail is distributed on the day that it is received. **In order to avoid delays, PLEASE** follow this format:

Camper's name & grade
Dorm Name

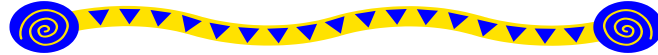
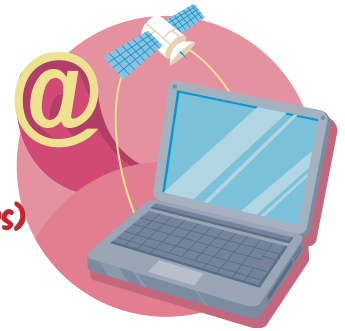
Camp Allendale, 4605 S Allendale Dr
Trafalgar, IN 46181

- Please refer to your confirmation for correct information and to ensure timely delivery of mail.
- Campers can receive e-mail only through our Bunk Notes program. We have subscribed to a one-way email program. There is an additional page included that explains the system.
- **No mail or Bunk Notes** are received on Friday. Please **don't** send Bunk Notes **after Noon on Thursday**. Bunk notes **are not** available for Day Camps and Grade 2 camps on the weekends.
- Due to the slow postal service, many time packages in the mail do not arrive on time. We highly recommend you use **Allendale care packages**. Get them from the Outpost store which is open on Sundays & Fridays & Saturdays of Day camps.



Stay in touch this SUMMER with One-Way CAMPER EMAIL!

(Not available for weekend camps-Day Camps & Grade 2 camps)



We are excited to tell you about our partnership with Bunk1.com!
Bunk1's secure, easy to use, summer website services let you stay in touch with your camper!

RETURNING PARENTS: If you had an account at this camp last summer, you can continue to use your old username and password. Simply sign in at the link below. The first time you visit the site you will be prompted to update your contact information and re-activate your account.

Get Started Today!

To set up a new account and visit our Online Community:

1. Go to our website at **camp-allendale.org**
2. Hover over "summer camp" and click "register"
3. Click the flashing "Camper Email" button*
4. Click the "Register Now" button
5. Enter your Pre-Approved Registration Code: **127448ALD**
6. Fill out all the required information
7. Purchase Bunk Note credits (you will need a credit card)
8. Send an email to your camper!



*If you cannot find this button, go to campallendale.bunk1.com instead and continue to the next step

** For your camper's safety, please do not share the Pre-Approved Registration code above.

Frequently Asked Questions

How do I send a Bunk Note (one-way email) to my camper?

Follow the instructions above except, after registering, simply sign in and click on the Bunk Notes button. Enter your camper's name, select the correct cabin, type your message, and hit the "Send" button.

Why do I have to pay to send Bunk Notes (one-way email)?

Each afternoon, the Bunk Notes system bundles and sorts the messages for us to print out and distribute to campers. Emails close for the week at noon on Thursday. It also protects us from computer viruses and allows us to easily manage these emails. Your payment helps us cover the cost of the system, paper, ink, and labor and, more importantly, frees us to do what we do best – be with your kids! Bunk Note credits cost \$1 each and are purchased in packs of various sizes.

Can other relatives use these services?

Certainly. Once you have set up your account, you will be able to invite other people to access these services.

What do I do if I lost my username and password?

You can get it online by going to www.Bunk1.com and clicking on the link "Lost Your Password?" (to the left of the page below the sign in button). You will receive an email with your username and password within a few minutes.

More Questions or Problems?

Please call Bunk 1 at 1-800-216-9472 or go to www.bunk1.com/contact.asp

Is Your Camper in Grades 1 or 2?

IF NOT YOU CAN SKIP THIS PAGE!

Grade 1 Camps-Saturdays

Grade 1 Camp-An opportunity for 1st graders to meet Jesus, create memories, make new friends and have fun in a first experience at camp.



PROGRAM DIRECTOR-GREENWOOD CHRISTIAN

Saturday, June 9, 2012

PROGRAM DIRECTOR- E. 91st & Mt. Gilead Christian

Saturday, June 16, 2012

PROGRAM DIRECTOR— CONNECTION POINTE CHRISTIAN

Saturday, June 30, 2012

Arrival time is 9:00 AM Check in gives the adult a numbered tag from the camper's wristband, which must be presented at pickup. **Closing Rally at 6:30 pm. Parents are welcome to attend. Camp dismisses at 7 pm.** Those picking up campers must present the numbered tag from the camper's wristband received at check in.

Lunch, dinner & canteen are all included in the cost for the day.

What to bring: Bible, swimsuit & towel, money for missions offering. Be sure to place your name on your things.

What will we do?? Bible study, crafts, canteen, swimming, recreation, missions, all in one day!!



Grade 2 camps Schedule Format

(this is all brand new!)

Friday check-in at 1:00 PM. Dorms open at 1:30 PM.

Saturday closing rally at 6:30 PM. Parents are welcome to attend. Camp dismisses at 7:00 PM.

<u>Date</u>	<u>Program Director</u>	<u>Location</u>
June 8-9	Wade	Hillside/Lakeview
June 15-16	Barrett/Reed	Hillside/Lakeview
June 29-30	Wohlenhaus	Hillside/Lakeview
July 20-21	Booth	Hillside/Lakeview
July 27-28	Kalsted	Hillside/Lakeview